



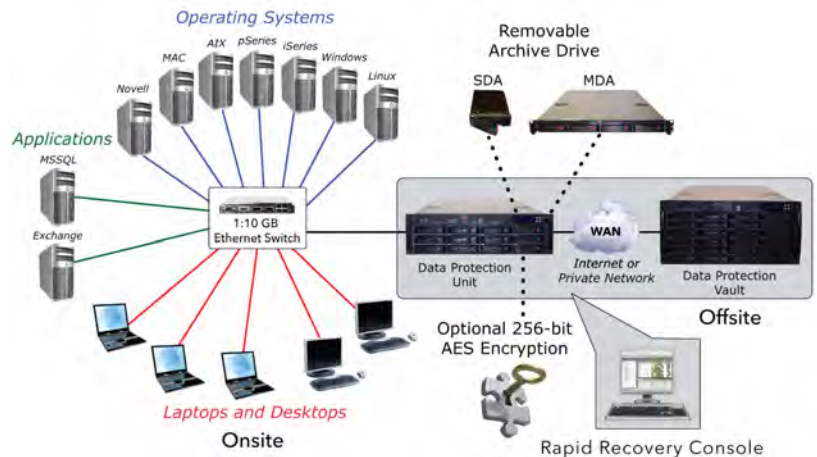
# Unitrends™

## Powerful Integrated Solution

Ever watch a trapeze artist work without a net? Remember the rush of anxiety you felt at every demanding move? It's the same feeling most businesses have when they look at their system backup and disaster recovery plans...the feeling of anxiety and no safety net. Unitrends' Data Protection Unit (DPU) family of appliances provides the IT safety net that most companies perform without.

Unitrends' solution makes the safety net stronger and easier to use by adding new features and providing a true centralized management and monitoring tool. The Unitrends DPU is the only product on the market to combine the following backup and recovery technologies in a single integrated appliance:

Unitrends offers disk-to-disk (D2D) data protection in an integrated set of appliances that scales from the smallest to the largest business. Our elegantly simple solution to the real-world issues of business continuity and disaster recovery sets us apart.



### > Advanced BareMetal Recovery

BareMetal provides sector/track level data protection that allows restoration of failed systems without the need to format drives, load OSs and reinstall applications. This ability has been further enhanced to allow BareMetal recovery to new hardware that may not match the original system configuration.

### > Disk-Based Archiving

All Unitrends DPU appliances offer full support for true disk-based archiving. Disk archiving provides a level of off-site protection and reliability not possible with tape, and provides extremely high cartridge density and recovery speed. All systems come with full support for single drive archiving. The Unitrends' Multi-Drive Archiving option expands this up to 4 drives and up to 4TB, which can typically accommodate at least 6TB of user data, and often 10TB or more, depending on the type of data and the effective compression rate.

### > Application Specific Protection

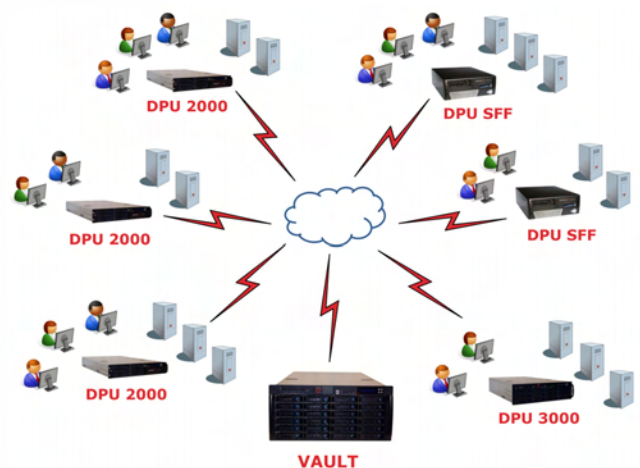
Many core business applications have unique backup requirements that must be addressed to get reliable and consistent backups, and optimal recovery options. Each DPU includes application-specific backup technology with support for Microsoft Exchange, Microsoft SQL servers and other applications.

### > Electronic Data Vaulting

EDV allows IT professionals to implement a true "lights out" data protection plan where off-site data storage occurs automatically. EDV provides full protection from site-level disasters and an unequalled ability to test and verify recovery capabilities.

### > Point-in-Time File Backup

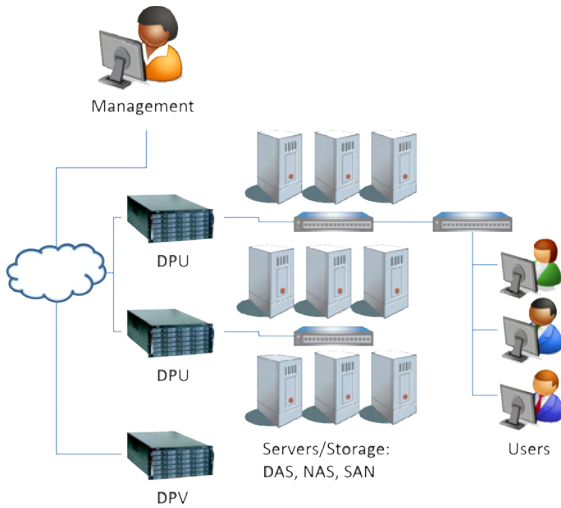
File level backups are used to protect user data at intervals that match the business's needs. The DPU provides the ability to restore files, folders and systems to any day in a chosen recovery window, which can be 14 or 30 days. No more looking for tapes and hoping they work!



Local Data and BareMetal Protection with Vaulting

## > Rapid Recovery Console

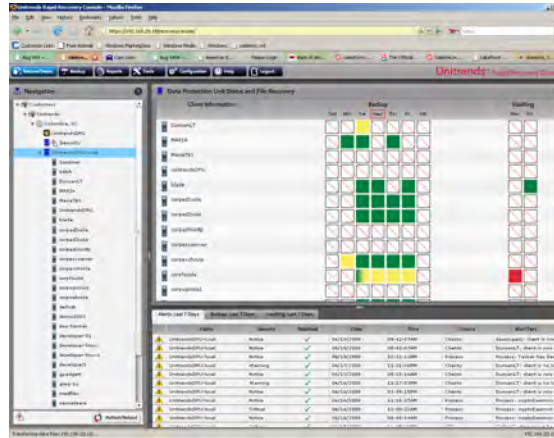
Rapid Recovery Console is Unitrends' unified interface that cuts administrative time by enabling powerful yet easy to use operation of disaster recovery and business continuity tasks.



This intuitive user interface operates in an innovative "single pane of glass" paradigm that provides monitoring and management capabilities across not only the entire set of technologies, capabilities, and configurations that Unitrends' offers but also allows single and multiple unit monitoring and management. Rapid Recovery Console is a central component of our ISE strategy - Integrated, Simple, and Elegant - that enables our products to be substantially easier to manage than traditional disaster recovery and business continuity products. This provides a substantial ROI through significantly decreased TCO in terms of minimizing up-front training and day-to-day operational costs.

## > Encryption

These days, threats to your organization's - or more importantly, your customers' - data lie around every corner. Whether it's as simple as personnel turn over or as grave as having your systems hacked, you need to safeguard your information. Unitrends has the solution for you. Unitrends' InCrypt technology offers IT administrators a solution for regulatory and corporate requirements to protect their employer's data from unauthorized access and theft. All data remains encrypted until a request is made to restore the data. If the correct passphrases are in place, recovery proceeds without administrator involvement. Encryption requires one or two InCrypt cards which provide 256-bit AES encryption.



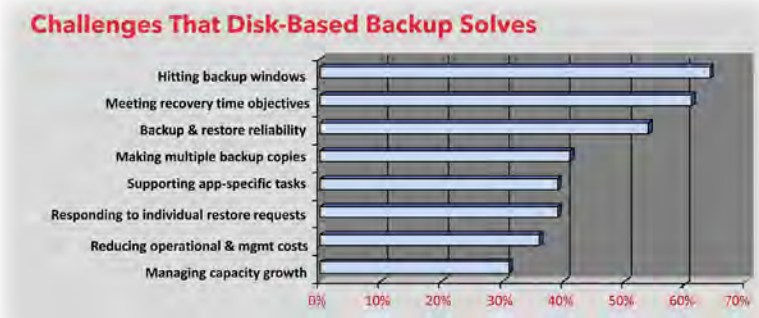
## > Enterprise-Class Protection for SMBs

Businesses need three key data protection components for a full safety net:

- Local data backup, recovery, and removable-disk archiving
- Rapid, BareMetal recovery of entire servers following a catastrophic failure
- Electronic data vaulting to a remote location for disaster-recovery purposes

Unitrends' solutions address all three data protection needs, through integrated, simple and elegant Data Protection Units and Data Protection Vaults. One vendor; one user interface; one source for the premier backup and disaster protection for small- and medium-sized businesses. The industry's best reliability, best user interface, and best economic value.

You've waited long enough. Struggled with tape-based solutions long enough. Worried about backup windows long enough. Make a break-move to disk-to-disk backup, with local archiving, BareMetal recovery of entire failed mission-critical servers, and integrated electronic off-site vaulting.



One size does not necessarily fit all. But Unitrends' DPUs and DPVs fit virtually all SMBs, and deliver enterprise-quality solutions at an affordable price. Contact us today for a quotation.

# Product Data

## System Capabilities

### > Management

Backups and schedules  
 Customizable reporting  
 CEP Alerts via RRC  
 Daily summary reporting  
 E-mail status reporting  
 Hardware status alerting  
 Secure remote access  
 Recovery  
 Configuration  
 Task Status  
 Diagnostic Tools

### > Regulatory

UL, CSA, CE and FCC

### > Performance

Backup<sup>1</sup> 2GB/min  
 backup throughput  
 with compression

Compression 2x to 20x depending on  
 data type

### > Scalability

Protected for a 30-day retention period  
 assuming weekly master backups and daily  
 incremental backups.

DPU SFF up to 200GB  
 DPU 2000 up to 1TB  
 DPU 3000 up to 2.5TB  
 DPU 5000 up to 5TB

### > Application-Specific Support

#### Full Client<sup>2</sup>

Microsoft Exchange 2007 Store Level Backup  
 Microsoft Exchange 2003 Continuous Protection  
 (Brick Level)

Microsoft Exchange 2000 Store Level Backup  
 Microsoft Exchange 2003 Store Level Backup

Microsoft SQL MSDE  
 Microsoft SQL Express  
 Microsoft SQL 2000  
 Microsoft SQL SBS  
 Microsoft SQL 2005

Novell Groupwise 6.0<sup>3</sup>  
 Novell Groupwise 7.0<sup>3</sup>

VMware

Other Application Support<sup>4</sup>

1- iSeries performs at 4GB/hour to 6GB/hour on the smaller  
 iSeries platforms and the speed scales up with platforms.

2- Full Client support provides virtually total automation of the  
 backup and recovery process for the listed applications.

3- Requires third party open tile manager from St. Bernard









4- Support for these applications provides similar functionality as  
 Full Client support, but requires more interaction with and  
 control by the user.

### > OS Support

Operating System	Type of Backup			
	File Level	BareMetal	*Hot BareMetal	D2K
<b>Windows Server Operating Systems</b>				
Windows NT	✓	✓		
Windows 2000	✓	✓	✓	
Windows 2003	✓	✓	✓	✓
Windows 2003-64 bit	✓	✓	✓	
Windows Small Business Server	✓	✓	✓	
<b>Windows Client Operating Systems</b>				
Windows 95	✓	✓		
Windows 98	✓	✓		
Windows ME	✓	✓		
Windows XP	✓	✓	✓	
Windows Vista	✓	✓	✓	
Linux/GNU x86-32	✓	✓	✓	
Netware 5.x	✓	✓		
Netware 6.x	✓	✓		
Novell OES-Netware	✓	✓		
pSeries/AIX 4.x	✓			
pSeries/AIX 5.x	✓			
i5/OS V5R1	✓			
i5/OS V5R2	✓			
i5/OS V5R3	✓			
i5/OS V5R4	✓			
Solaris 2.5	✓		✓	
Solaris 2.6	✓		✓	
Solaris 2.7	✓		✓	
Solaris 2.8	✓		✓	
Solaris 2.9	✓		✓	
Solaris 2.10	✓		✓	
Solaris x86	✓	✓		
MAC 10.2	✓			
MAC 10.3	✓			
MAC 10.4	✓			
HP-UX 9.x	✓			
HP-UX 10.x	✓			
Dec Alpha	✓			
FreeBSD 3.6 and above	✓	✓		
SCO OpenServer 5	✓	✓		
SCO 5.0.6	✓	✓		
Uniware 7.13	✓	✓	✓	
Uniware 7.14	✓	✓	✓	
SGI IRIX	✓			
VMware ESX 3.0	✓	✓		

\* We do not support Hot BareMetal for Dynamic Disk Configurations

# System Comparison

	<b>Data Protection Units</b> <i>Multi-OS rapid backup and recovery on-site protection.</i>				<b>Archive</b>	<b>Data Protection Vaults</b> <i>Complete "lights out" off-site protection.</i>		
								
<b>Model</b>	<b>DPU SFF</b>	<b>DPU 2000</b>	<b>DPU 3000</b>	<b>DPU 5000</b>	<b>MDA</b>	<b>DPV 2000</b>	<b>DPV 3000</b>	<b>DPV 5000</b>
<b>Drives</b>	1 SATA	6 SATA	12 SATA	24 SATA	4 SATA	6 SATA	12 SATA	24 SATA
<b>TSC* Protected for a 30 Day Retention Period</b>	XL 75 GB GL 150 GB TL 250 GB	1.0 TB	2.5 TB	5.0 TB	NA	NA	NA	NA
<b>Maximum Vaulted System Content**</b>	NA	NA	NA	NA	NA	3.0 TB	6.7 TB	13.3 TB
<b>Configuration</b>	1 X SATA Primary Backup Drive***	RAID 5	RAID 5	RAID 5	RAID 0	RAID 5	RAID 5	RAID 5
<b>Memory</b>	2 GB	2 GB	2 GB	4 GB	NA	2 GB	2 GB	4 GB
<b>InCrypt</b>	NA	Optional Hardware Encryption	Optional Hardware Encryption	Optional Hardware Encryption	NA	NA	NA	NA
<b>Compression</b>	Software Only	Software Std. Hardware Opt.	Hardware Compression	Hardware Compression	NA	NA	NA	NA
<b>Network</b>	1 GB Ethernet	2 X 1 GB Ethernet	2 X 1 GB Ethernet	2 X 1 GB Ethernet	NA	2 X 1 GB Ethernet	2 X 1 GB Ethernet	2 X 1 GB Ethernet
<b>Optional Archive Drive</b>	NA	250 GB 500 GB 750 GB 1 TB	250 GB 500 GB 750 GB 1 TB	250 GB 500 GB 750 GB 1 TB	NA	NA	NA	NA
<b>Physical</b>								
<b>Power Supply</b>	1 X 200 W	1 X 460 W Std. Optional Redundant Power Supply	1 X 600 W Std. Optional Redundant Power Supply	4 X 500 W Std.	1 X 400 W Std.	1 X 460 W Std. Optional Redundant Power Supply	1 X 600 W Std. Optional Redundant Power Supply	4 X 500 W Std.
<b>AC Voltage</b>	115-230	100-240	100-240	100-240	100-240	100-240	100-240	100-240
<b>Current/Max</b>	6 Amp Max	8 Amp Max	10 Amp Max	4 X 8 Amp Max	8 Amp Max	8 Amp Max	10 Amp Max	4 X 8 Amp Max
<b>Format</b>	Desktop 15"D X 14"W X 5"T	2U Rackmount	3U Rackmount	5U Rackmount	1U Rackmount	2U Rackmount	3U Rackmount	5U Rackmount
<b>Weight</b>	16 lbs	40 lbs	70 lbs	100 lbs	18 lbs	40 lbs	70 lbs	100 lbs

\* TSC (Total System Content) is defined by Unitrends as Operating Systems, Applications and all associated data.

\*\* Vault capacity available for last master, last incremental, last BareMetal and last Application backups as selected by the IT administrator.

\*\*\* DPU SFF uses a daily drive synchronization process which creates a copy of the primary backup drive onto a removable rotational drive. Removable rotational drive(s) must match the size of the primary backup drive and at least one rotational drive is required as part of the minimum configuration.

Visit [www.unitrends.com](http://www.unitrends.com) for further product releases and enhancements.  
We welcome your suggestions. Please email us anytime at [sales@unitrends.com](mailto:sales@unitrends.com).

# Unitrends™

7 Technology Circle, Suite 100  
Columbia, SC 29203  
803 454 0300 > 803 454 0308 fax

©2008 Unitrends